

What Do Lead Service Lines Look Like?

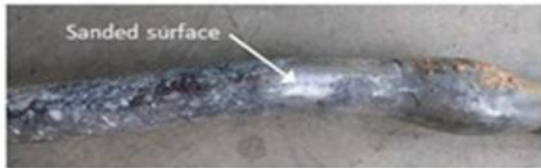


Lead service lines are generally a dull gray color and are very soft. You can identify them easily by carefully scratching with a key. If the pipe is made of lead, the area you've scratched will turn a bright silver color.

Do not use a knife or other sharp instrument and take care not to puncture a hole in the pipe.

Note: Galvanized piping can also be dull gray in color. A strong magnet will typically cling to galvanized pipes, but will not cling to lead pipes.

Lead service lines can be connected to the residential plumbing using solder and have a characteristic solder "bulb" at the end, a compression fitting, or other connector made of galvanized iron or brass/bronze.



Lead pipes are dull gray and very soft and look like a new nickel when scratched or sanded.



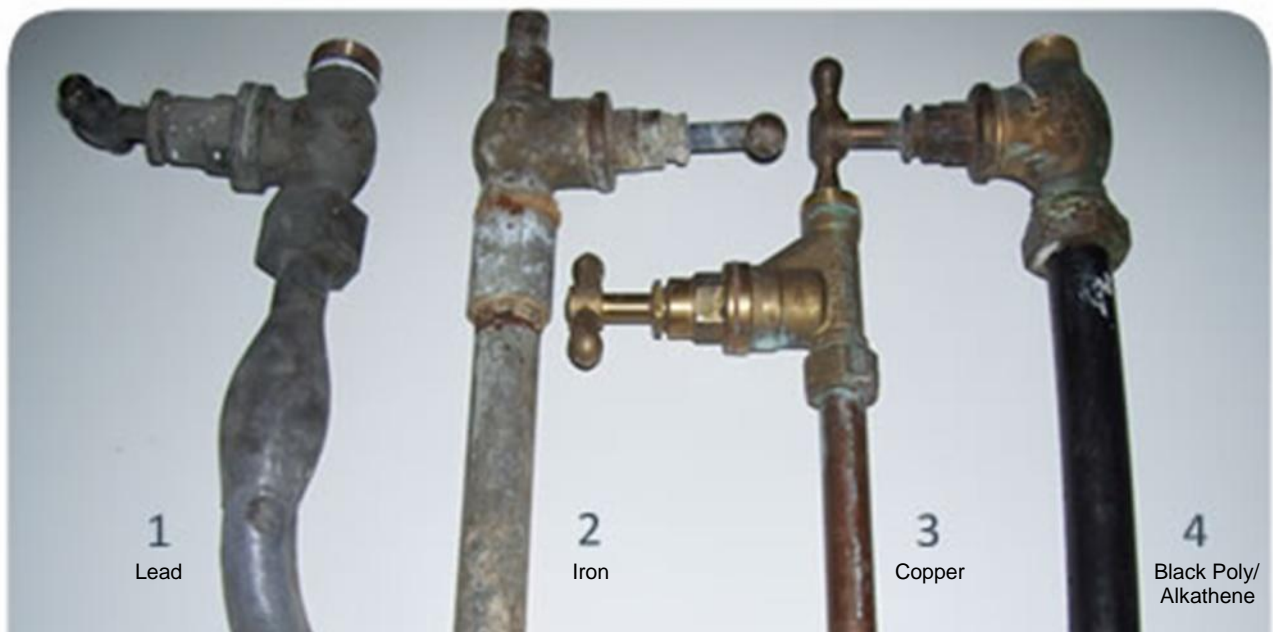
Copper pipes look like a new penny when scratched or sanded.



Galvanized pipes are dull gray and a strong magnet will stick to the pipe. Top to bottom: new, aged, removed from the ground.



Plastic service lines are typically black or white.



1
Lead

2
Iron

3
Copper

4
Black Poly/
Alkathene